

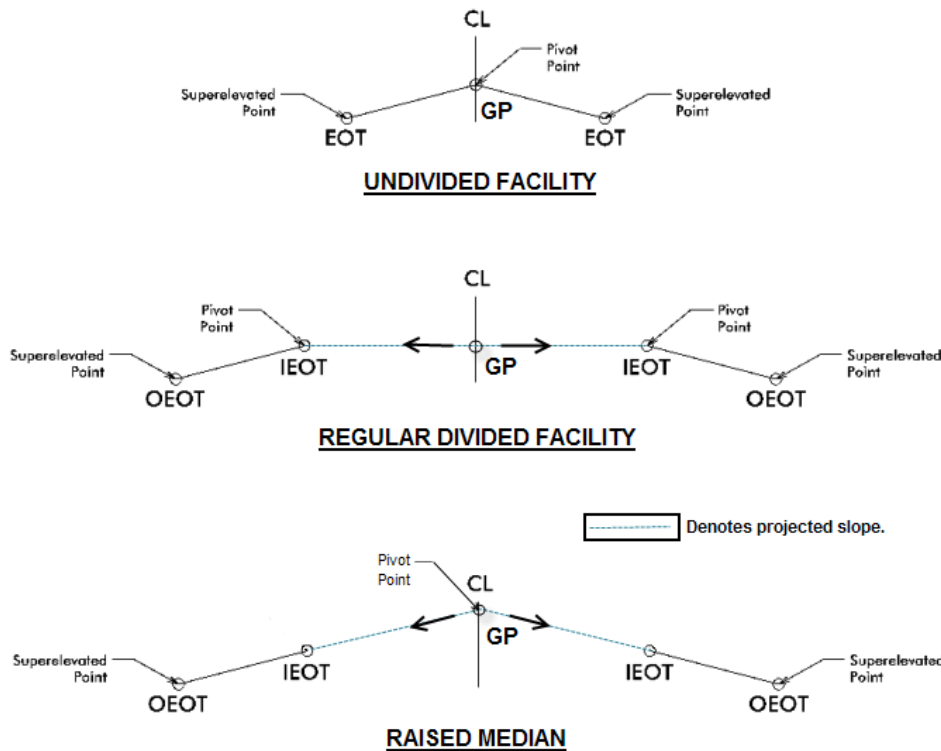
4_1 RAISED MEDIAN TEMPLATE SUPERELEVATION PIVOT POINT

Question:

Is the pivot point different between raised median and regular divided facility templates?

Answer:

Yes. Unlike divided facility templates which uses the inside EOT point as the pivot point, raised median uses the grade point at the centerline as the pivot point. This will ensure the inside EOT points will always pass through the grade point when superlevation is applied. Below is an illustration of the pivot points for the three major types of templates in the NCDOT Roadway Library.



Note the location of the grade point for raised medians to be used as the pivot point. It is called **CL_PGL** and not any of the points on the surface above it.

